

L1F – passive GPS L1 Filter

Description:

Designed with the thin link margins of satellite navigation systems in mind, the L1F is a single input L1 Band Passive Filter that passes only L1 GPS frequency.

The device features excellent side band rejection with an insertion loss of less than 2.2 dB. The product may pass DC or can also be used as a DC block.

The L1F Passive Filter comes with various options to meet your specific needs. See “Options” for more details.

L1FM



L1FT

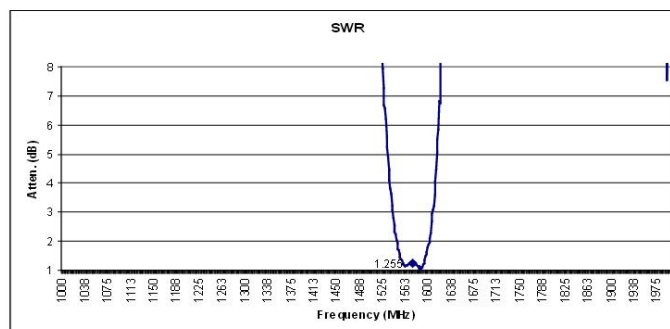
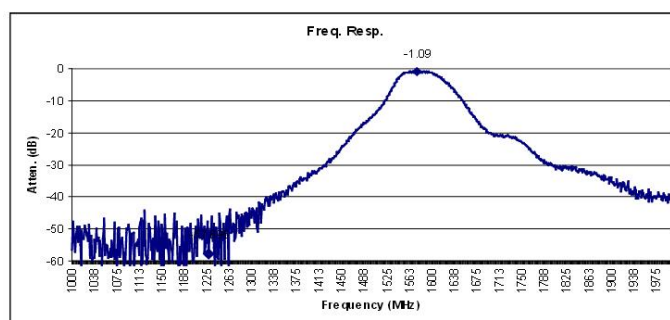


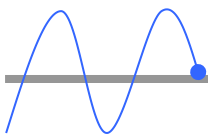
Features:

- Low Insertion Loss, IL < 2.2 dB
- Excellent Out of Band Rejection
- High Rejection Option Available
- Passes DC for Active Antenna

IMPORTANT:

The Filter L1FT (Tiny Housing) is only available with high rejection!





L1F – passive GPS L1 Filter

ELECTRICAL SPECIFICATIONS

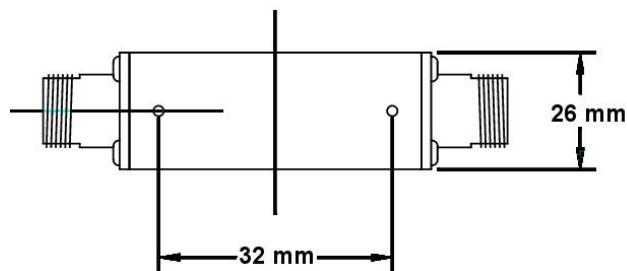
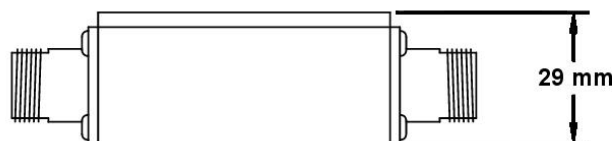
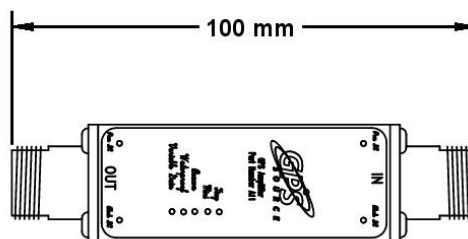
> Input / Output Impedance	50 Ω
> Frequency	
Standard	1.540 – 1.625 GHz
High Rejection Option	1.565 – 1.585 GHz
> Insertion Loss - Standard	
Typical	1.5 dB
Min / Max	1.0 / 2.2 dB
> Insertion Loss - High Rejection	
Typical	3.7 dB
Min / Max	3.0 / 4.2 dB
> SWR Input / Output	2.0 : 1
> Rejection Standard	
@ +100 MHz / -100 MHz	-13 dB / -18 dB
@ +150 MHz / -150 MHz	-18 dB / -25 dB
> High Rejection Option	
@ +50 MHz / -50 MHz	-35 dB / -25 dB
@ +100 MHz / -100 MHz	-37 dB / -37 dB
> Ant/Thru Current	250 mA max.
> Max. RF Input	30 dBm
> DC Input on OUT	16 V DC max.

PHYSICAL SPECIFICATIONS

> RF Ports	
Input	1
Output	1
> Operating Temperature	-40 bis 85°C
> Mini Housing	
Dimensions (L x H x B)	101 x 29 x 26 mm
Weight	~ 110 g
> Tiny Housing	
Dimensions (L x H x B)	83 x 12 x 26 mm
Weight	~ 40 g

OPTIONS

> RF Connectors	
N (m, f)	(only Mini Housing)
TNC (m, f)	(only Mini Housing)
SMA (m, f)	
> Housing	
Mini	
Tiny	
> Rejection	
Standard	
High Rejection	
> DC Option on Input / Output	
DC Pass	
DC Block	



IMPORTANT:

The Filter L1FT (Tiny Housing) is only available with high rejection!